



These single-piece high performance coaxial cable connectors are designed specifically to provide the highest quality connector-cable interface while simplifying and speeding up the attachment of connectors to RADIAFLEX® cables. The connectors provide outstanding value to users because they permit quick, easy and reliable installation at any location, thereby allowing the operator flexibility while saving installation time and money. They attach to prepared cable in one piece assuring error-free attachment. All connectors are fully tested for mechanical and electrical compliance specifications. They are available in all popular cable sizes in both type N and 7-16 DIN interface.

FEATURES / BENEFITS

- Single-piece design for Fast and Easy Installation - Reliable and simple attachment avoids unnecessary connector adjustments and provides outstanding performance. Saves time and provides cost savings.
- Robust Mechanical Design - Low and consistent IM performance.
- Excellent Electrical Performance - Low VSWR
- Totally Waterproof - Assures safe, long term operation in the harshest of environments.



RADIAFLEX connector

Technical features

GENERAL SPECIFICATIONS

Transmission Line Type		Coaxial Cable
Cable Size		7/8
Cable Type		Radiating
Model Series		all RLF, RLK and RAY78-50A-Series
Connector Interface		7-16 DIN
Connector Type		Straight
Sealing Method		Shrinking Sleeve
Gender		Female

ELECTRICAL SPECIFICATIONS

Nominal Impedance, ohms	Ohm	50
Maximum Frequency	GHz	3.7

MECHANICAL SPECIFICATIONS

Length	mm (in)	67.9 (2.67)
Outer Diameter	mm (in)	34 (1.33)
Weight	kg (lb)	0.17 (0.37)
Body Material		Brass / Plating: Tri metal
Inner Contact Material		Copper / Plating: Silver
Inner Contact Attachment		Spring Finger / Plating: silver
Outer Contact Attachment		Spring loop / Plating: silver

ACCESSORIES

Poly Hook Spanner	mm (in)	PHS 60-90-5 Ø 60-90 (2.3-3.5) Pin 5 (0.2)
-------------------	---------	---

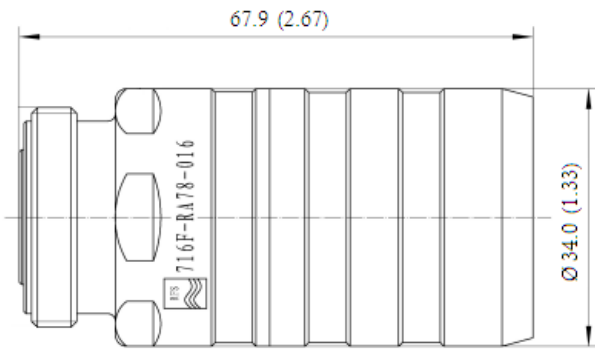
TESTING AND ENVIRONMENTAL

Waterproof Level		IP68
------------------	--	------



716F-RA78-016

7-16 DIN Female Connector for 7/8" RADIAFLEX® cable



External Document Links

[1000009163-01_Application Note_Installation of Heat Shrink Sleeves for additional sealing of Connectors.pdf](#)
[Installation Instruction](#)

Notes